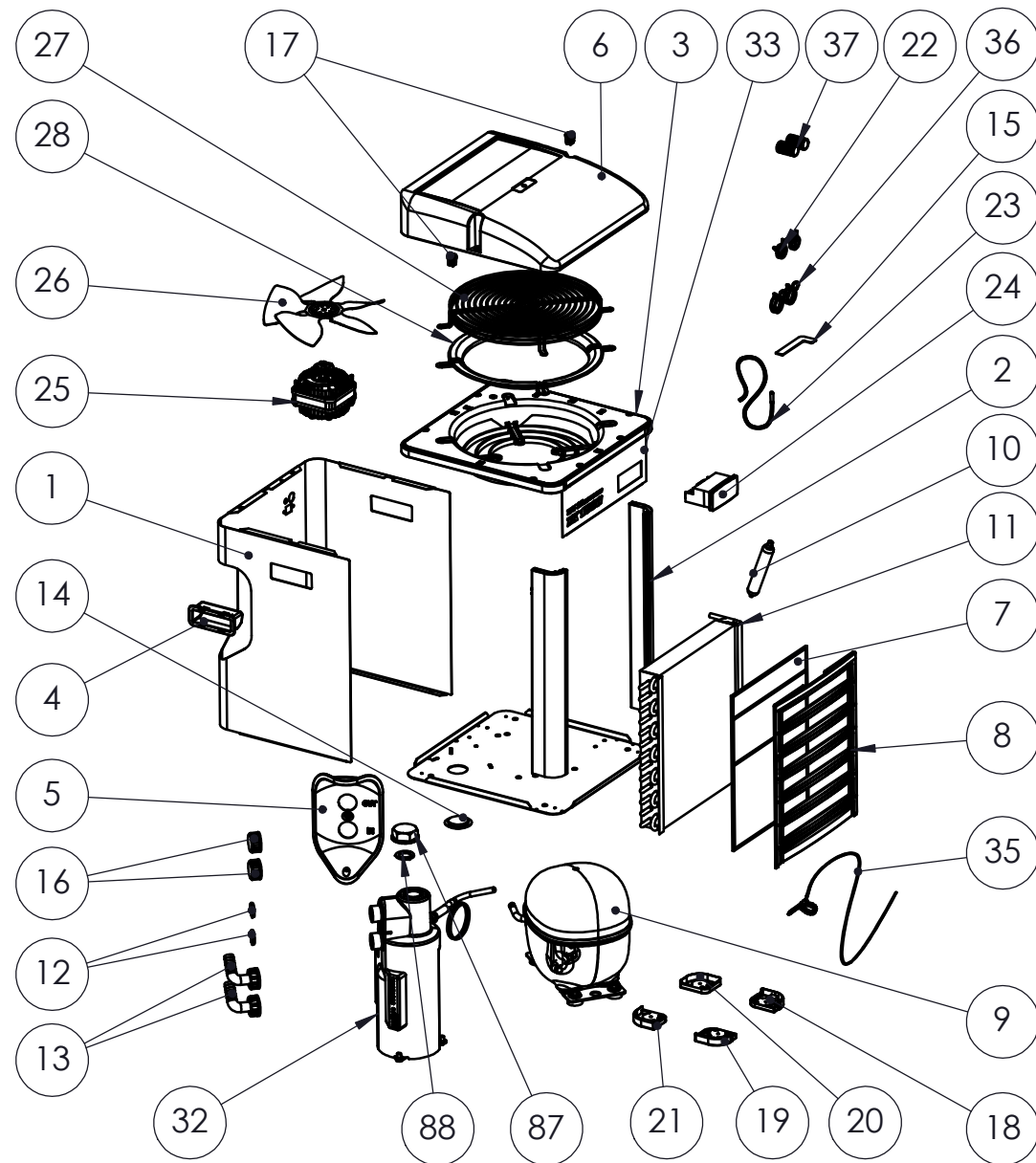


CODE	DESCRIZIONE	DESCRIPTION
1.2.216	Mantello	Metal fairing
1.2.221	Profilato Al	AL profile
1.2.277	Supporto ventilatore (grigio)	Fan support (grey)
1.2.223	Maniglia TK	Handle
1.2.224	Pannello attacchi acqua	In-out water panel
1.9.142	Convogliatore aria	Air flow conveyor
1.9.144	Filtro aria	Air Filter
1.9.147	Griglia filtro aria	Air filter grid
2.0.020	Compressore 230V 50Hz (senza parte elettrica)	Compressor 230V 50Hz (without electrical parts)
3.5.120	Parti elettriche (da fornire col compressore)	Compressor electrical parts (to supply with compressor)
4.9.066	Fermacavo	Relief
4.1.242	Coperchio	Cover
4.1.242	Dispositivo avviamento ePTC	epTC
2.9.065	Accessori compressore	Compressor accessories
3.5.117	Antivibrante	Feet
3.5.118	Pin snap-on	Pin snap-on
3.5.119	Clip snap-on	Clip snap-on
3.5.119	Rondella snap-on	Washer snap-on
2.3.380	Filtro deidratatore 15g due vie CE	Filter dryer 15g two ways CE
2.3.322	Condensatore	Condenser
2.4.113	Guarnizione EPDM 3/4"	EPDM gasket 3/4"
2.4.142	Portagomma curvo 3/4"x16	Pipe holder 3/4"x16
2.9.049	Tappo calotta inferiore scambiatore	Exchanger bottom cap
2.9.051	Chiave chiusura 1/4 giro	1/4 turn clip
2.9.055	Tappo nylon 3/4"	Nylon cap 3/4"
3.5.044	Chiusura 1/4 giro	1/4 turn clip closer
3.5.090	Piedino n.1	Foot n.1
3.5.091	Piedino n.2	Foot n.2
3.5.092	Piedino n.3	Foot n.3
3.5.093	Piedino n.4	Foot n.4
3.5.095	Fascetta a molla d21,2	Hose clamp d21,2
4.1.021	Sonda termostato fornire montata sul connettore 4.6.136	Thermostat probe Supply with 4.6.136 connector
TERM01#L_24TK2CC +2.3.324	Termostato 230V 50Hz + tubo aspirazione	Thermostat 230V 50Hz+suction pipe
4.3.246	Ventilatore 230V 50Hz -fornire con connettore 4.6.124 montato -fornire con n°4 dadi 3.3.013 montati	Fan motor 230V60Hz -supply with 4.6.124 connector -supply with n°4 nuts 3.3.013
4.3.127	Ventola 230V 50Hz	Fan blade 230V 50Hz
4.9.047	Griglia ventilatore	Fan grid
6.3.050	Imballo singolo	Packaging box
6.9.014	Imballo polistirolo	Styrofoam packaging
SSCA12#4122	Scambiatore	Exchanger
1.2.301	Pannello frontale	Front Panel
4.1.169	Sonda surriscaldamento	Overhetaing probe
3.5.115	Fascetta a molla d26,3 (per tubo ID20)	Hose clamp d26,3 (for ID20 pipe)
2.4.200	Manicotto 20-16 (per tubo ID20)	Hose adaptor (for ID20 pipe)



Material:	Drawing: TK2000 L - 230V 50Hz - R290 SPARE PARTS		
Thickness:	File: Spare_parts_TK2000L_		
Finishing:	Your.code:	Code: TKC#XX41CC22E	
Volume:	Tol.	Scale: 1:10	Date: 22/04/2020
Approved:	Via Gregorio Ricci Curbastro, 8 48124 Fornace Zarattini RA-ITALY Tel. +39 0544 408333 Fax 280084 <a href="http://www.tecoonline.com">http://www.tecoonline.com</a>		
	Drawer: Giulia		

AS BY LAW ENACTED WE RESERVE US THE PROPERTY OF THIS DOCUMENT WITH THE PROHIBITION OF REPRODUCE IT, SAVE IT INTO ACHIVES SYSTEM, GIVE IT OR HOWEVER LENT IT TO THIRD PARTY WITHOUT OUR AUTHORIZATION. EVERY VIOLATION INVOLVES THE COMPENSATION FOR THE UNDERGONE DAMAGES.WE MAKE RESERVATIONS ABOUT ALL THE RIGHTS DERIVING FROM PATENTS OR MODELS.

Drawer: Giulia Modify: