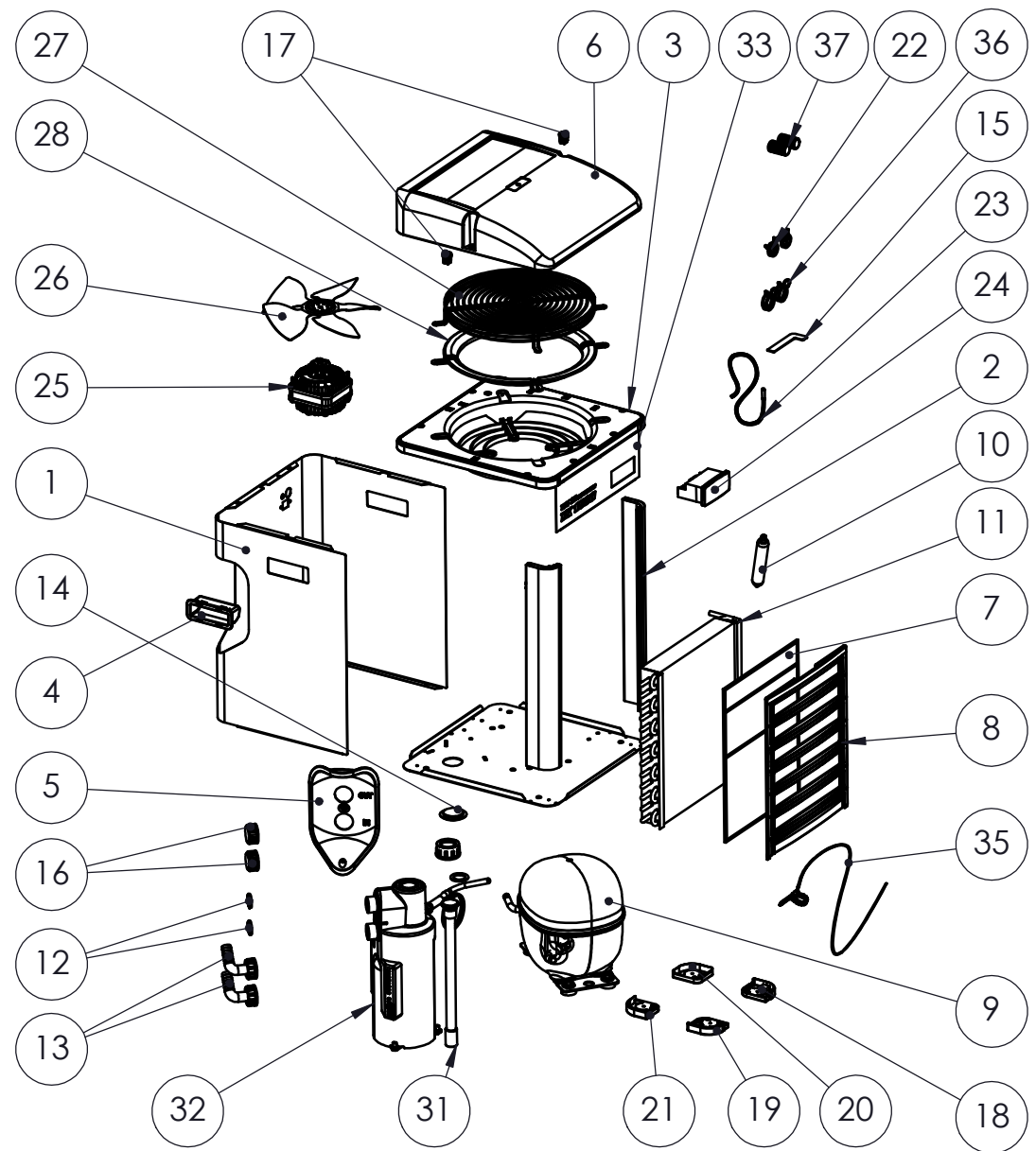


Verificare in etichetta dati tecnici il modello di refrigeratore, il tipo di refrigerante e l'alimentazione elettrica.

Please check chiller model, the kind of refrigerant and power supply in chiller technical label .

N	CODE	DESCRIZIONE	DESCRIPTION
1	1.2.214	Mantello TK500	Metal fairing TK500
	1.2.215	Mantello TK1000	Metal fairing TK1000
	1.2.216	Mantello TK2000	Metal fairing TK2000
2	1.2.219	Profilato Al TK500	AL profile TK500
	1.2.220	Profilato Al TK1000	AL profile TK1000
	1.2.221	Profilato Al TK2000	AL profile TK2000
3	1.2.277	Supporto ventilatore (grigio)	Fan support (grey)
4	1.2.223	Maniglia TK	Handle
5	1.2.224	Pannello attacchi acqua	In-out water panel
6	1.9.142	Convogliatore aria	Air flow conveyor
7	1.9.144	Filtro aria TK500	Air Filter TK500
	1.9.144	Filtro aria TK1000	Air Filter TK1000
	1.9.144	Filtro aria TK2000	Air Filter TK2000
8	1.9.145	Griglia filtro aria TK500	Air filter grid TK500
	1.9.146	Griglia filtro aria TK1000	Air filter grid TK1000
	1.9.147	Griglia filtro aria TK2000	Air filter grid TK2000
9	9a	Compressore (senza parte elettrica) <i>Vedere tabella compressori</i>	Compressor (without electrical parts) <i>See Compressor Table</i>
	9b	Parti elettriche compressore (da fornire con il compressore) <i>Vedere tabella compressori</i>	Compressor electrical parts (to supply with compressor) <i>See Compressor Table</i>
	9c	Elementi di fissaggio del compressore (da fornire con il compressore) <i>Vedere tabella compressori</i>	Compressor snap on and feet (to supply with compressor) <i>See Compressor Table</i>
10	2.3.380	Filtro deidratatore 15g due vie CE	Filter dryer 15g two ways CE
11	2.3.320	Condensatore TK500	Condenser TK500
	2.3.321	Condensatore TK1000	Condenser TK1000
	2.3.322	Condensatore TK2000	Condenser TK2000
12	2.4.113	Guarnizione EPDM 3/4"	EPDM gasket 3/4"
13	2.4.142	Portagomma curvo 3/4"x16	Pipe holder 3/4"x16
14	2.9.049	Tappo calotta inferiore scambiatore	Exchanger bottom cap
15	2.9.051	Chiave chiusura 1/4 giro	1/4 turn clip
16	2.9.055	Tappo nylon 3/4"	Nylon cap 3/4"
17	3.5.044	Chiusura 1/4 giro	1/4 turn clip closer
18	3.5.090	Piedino n.1	Foot n.1
19	3.5.091	Piedino n.2	Foot n.2
20	3.5.092	Piedino n.3	Foot n.3
21	3.5.093	Piedino n.4	Foot n.4
22	3.5.095	Fascetta a molla d21,2	Hose clamp d21,2
23	4.1.021	Sonda termostato <i>fornire montata sul connettore 4.6.136</i>	Thermostat probe <i>Supply with 4.6.136 connector</i>
24	TERM01#	Termostato <i>Vedere tabella termostati</i>	Thermostat <i>See Thermostat Table</i>
25	4.3.161	Ventilatore TK500 - TK1000 115V 60Hz	Fan motor TK500 - TK1000 115V 60Hz
	4.3.245	Ventilatore TK500 - TK1000 230V 50-60Hz	Fan motor TK500 - TK1000 230V 50-60Hz
	4.3.242(.001)	Ventilatore TK2000 115V 60Hz	Fan motor TK2000 115V 60Hz
	4.3.246	Ventilatore TK2000 230V 50-60Hz <i>(-fornire tutti con connettore 4.6.124 montato -fornire anche n°4 dadi 3.3.013 montati sui motori del TK2000)</i>	Fan motor TK2000 230V 50-60Hz <i>(-supply all of them with 4.6.124 connector -supply also n°4 nuts 3.3.013 with TK2000 motors)</i>
	26	4.3.159	Ventola TK500 -TK1000 r290
27	4.3.127	Ventola TK2000 r290	Fan blade TK2000 r290
27	4.9.047	Griglia ventilatore	Fan grid
28	4.9.070	Anello riduzione ventola (grigio)	Fan reducing ring (grey)
29	6.3.050	Imballo singolo	Packaging box
30	6.9.014	Imballo polistirolo	Styrofoam packaging
31	KRES03#TK34	Riscaldatore 300W 230V (da sn F21B2099)	230V 300W Heater (from sn F21B2099)
	KRES03#TK35	Riscaldatore 300W 115V (da sn F21B2099)	115V 300W Heater (from sn F21B2099)
	KRES03#TK24	Riscaldatore 300W 230V (pre sn F21B2099)	230V 300W Heater (until sn F21B2099)
	KRES03#TK25	Riscaldatore 300W 115V (pre sn F21B2099)	115V 300W Heater (until sn F21B2099)
32	SSCA12#	Scambiatore <i>Vedere tabella scambiatori</i>	Exchanger <i>See ExchangerTable</i>
33	1.2.278	Pannello frontale TK500 wifi r290	Front panel TK500 wifi r290
	1.2.279	Pannello frontale TK1000 wifi r290	Front panel TK1000 wifi r290
	1.2.280	Pannello frontale TK2000 wifi r290	Front panel TK2000 wifi r290
35	4.1.169	Sonda surriscaldamento	Overheating probe
36	3.5.115	Fascetta a molla d26.3 (per tubo ID20)	Hose clamp d26,3 (for ID20 pipe)
37	2.4.200	Manicotto 20-16 (per tubo ID20)	Hose adaptor (for ID20 pipe)



Material:	Drawing: TK500 -TK1000 -TK2000 SPARE PARTS (R290 chillers)		
Thickness:	File: Spare_parts_TKC_		
Finishing:	Your.code:	Code:	
Volume:	Tol.	Scale: 1:10	Date: 20/06/2022
Approved:	Via Gregorio Ricci Curbastro, 8 48124 Fornace Zarattini RA-ITALY Tel. +39 0544 408333 Fax 280084 http://www.teconline.com		
	Drawer: Giulia		

AS BY LAW ENACTED WE RESERVE US THE PROPERTY OF THIS DOCUMENT WITH THE PROHIBITION OF REPRODUCE IT, SAVE IT INTO ACHIVES SYSTEM, GIVE IT OR HOWEVER LENT IT TO THIRD PARTY WITHOUT OUR AUTHORIZATION. EVERY VIOLATION INVOLVES THE COMPENSATION FOR THE UNDERGONE DAMAGES.WE MAKE RESERVATIONS ABOUT ALL THE RIGHTS DERIVING FROM PATENTS OR MODELS.

Drawer: Giulia Modify: