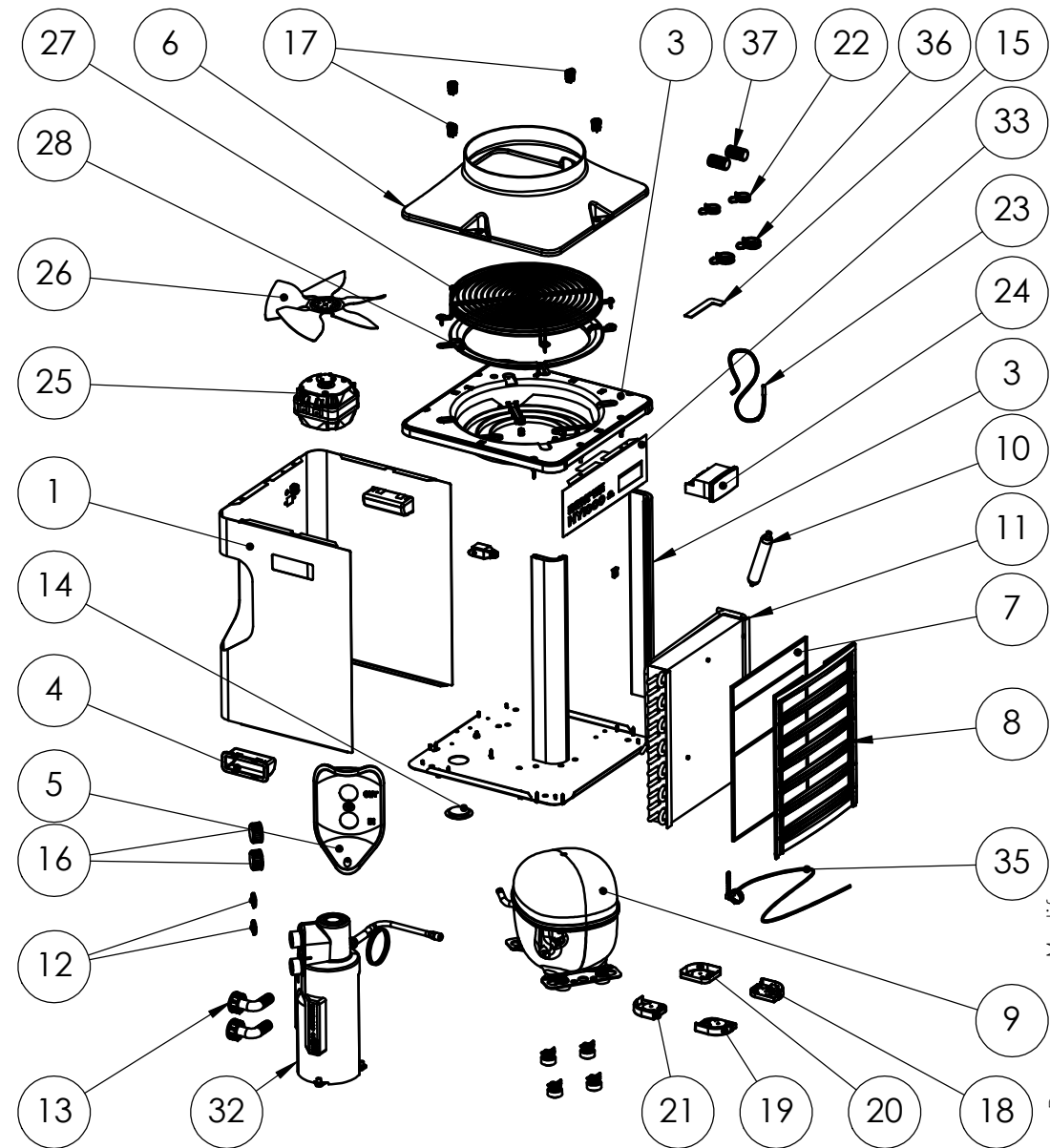


Verificare in etichetta dati tecnici il modello di refrigeratore, il tipo di refrigerante e l'alimentazione elettrica.
Please check chiller model, the kind of refrigerant and required power supply in chiller technical label.

N	CODE	DESCRIZIONE	DESCRIPTION
1	1.2.214	Mantello HY500	HY500 Metal fairing
	1.2.215	Mantello HY1000	HY1000 Metal fairing
	1.2.216	Mantello HY2000	HY2000 Metal fairing
2	1.2.219	Profilato Al TK500	HY500 Al profile
	1.2.220	Profilato Al TK1000	HY1000 Al profile
	1.2.221	Profilato Al TK2000	HY2000 Al profile
3	1.2.261	Supporto ventilatore HY	HY Fan support
4	1.2.223	Maniglia	Handle
5	1.2.224	Pannello attacchi acqua	In-out water panel
6	1.9.181	Convogliatore aria HY	Air flow HY conveyor
7	1.9.144	Filtro aria HY500	HY500 Air Filter
		Filtro aria HY1000	HY1000 Air Filter
		Filtro aria HY2000	HY2000 Air Filter
8	1.9.145	Griglia filtro aria HY500	HY500 Air filter grid
	1.9.146	Griglia filtro aria HY1000	HY1000 Air filter grid
	1.9.147	Griglia filtro aria HY2000	HY2000 Air filter grid
9	9a	Compressore (senza parte elettrica) <i>Vedere tabella compressori</i>	Compressor (with electrical parts) <i>See Compressor Table</i>
	9b	Parti elettriche compressore (da fornire con il compressore) <i>Vedere tabella compressori</i>	Compressor electrical parts (to supply with compressor) <i>See Compressor Table</i>
	9c	Elementi di fissaggio del compressore (da fornire con il compressore) <i>Vedere tabella compressori</i>	Compressor snap on and feet (to supply with compressor) <i>See Compressor Table</i>
10	2.3.380	Filtro deidratatore 15g due vie CE	Filter dryer 15g two ways CE
11	2.3.320	Condensatore HY500	HY500 Condenser
	2.3.321	Condensatore HY1000	HY1000 Condenser
	2.3.322	Condensatore HY2000	HY2000 Condenser
12	2.4.113	Guarnizione EPDM 3/4"	EPDM gasket 3/4"
13	2.4.142	Portagomma curvo 3/4"x16	Pipe holder 3/4"x16
14	2.9.049	Tappo calotta inferiore scambiatore	Exchanger bottom cap
15	2.9.051	Chiave chiusura 1/4 giro	1/4 turn clip
16	2.9.055	Tappo nylon 3/4"	Nylon cap 3/4"
17	3.5.044	Chiusura 1/4 giro	1/4 turn clip closer
18	3.5.104	Piedino n.1	Foot n.1
19	3.5.105	Piedino n.2	Foot n.2
20	3.5.106	Piedino n.3	Foot n.3
21	3.5.107	Piedino n.4	Foot n.4
22	3.5.095	Fascetta a molla d21,2	Hose clamp d21,2
23	4.1.021	Sonda temperatura dell'acqua	Water probe
24	TERM01#	Termostato <i>Vedere tabella termostati</i>	Thermostat <i>See Thermostat Table</i>
25	4.3.161	Ventilatore HY500 - HY1000 115V 60Hz	Fan motor HY500 - HY1000 115V 60Hz
	4.3.142	Ventilatore HY500 - HY1000 230V 50-60Hz	Fan motor HY500 - HY1000 230V 50-60Hz
	4.3.162	Ventilatore HY2000 115V 60Hz	Fan motor HY2000 115V 60Hz
	4.3.119	Ventilatore HY2000 230V 50-60Hz	Fan motor HY2000 230V 50-60Hz
26	4.3.159	Ventola HY500 - HY1000 r290	Fan blade HY500 - HY1000 r290
	4.3.127	Ventola HY2000 r290	Fan blade HY2000 r290
27	4.9.047	Griglia ventilatore	Fan grid
28	4.9.059	Anello riduzione ventola HY	HY Fan reducing ring
29	6.3.056	Imballo singolo HY	Packaging box
30	6.9.014	Imballo polistirolo	Styrofoam packaging
32	SSCA12#	Scambiatore <i>Vedere tabella scambiatori</i>	Exchanger <i>See ExchangerTable</i>
	1.2.281	Pannello frontale HY500 wifi r290	Front panel HY500 wifi r290
33	1.2.282	Pannello frontale HY1000 wifi r290	Front panel HY1000 wifi r290
	1.2.283	Pannello frontale HY2000 wifi r290	Front panel HY2000 wifi r290
35	4.1.169	Sonda surriscaldamento	Overheating probe
36	3.5.115	Fascetta a molla d26.3 (per tubo ID20)	Hose clamp d26.3 (for ID20 pipe)
37	2.4.200	Manicotto 20-16 (per tubo ID20)	Hose adaptor (for ID20 pipe)



Disegno: RICAMBI HY500-HY1000-HY2000 (R290 chillers)

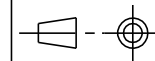
Material: Drawing: HY500-HY1000-HY2000 SPARE PARTS (R290 chillers)

Thickness: File: Spare_parts_HYC

Finishing: Your code: Code:

Volume: Tol. Scale: 1:10 Date: 13/02/2020

Approved: Via Ricici Curbastro 8
Fornace Zarattini
48124 RAVENNA - ITALY
Tel. +39 0544 408333 Fax280084
http://www.tecoonline.com



Drawer:
Giulia

TECO

AS BY LAW ENACTED WE RESERVE US THE PROPERTY OF THIS DOCUMENT WITH THE PROHIBITION OF REPRODUCE IT, SAVE IT INTO ACHIVES SYSTEM, GIVE IT OR HOWEVER LENT IT TO THIRD PARTY WITHOUT OUR AUTHORIZATION. EVERY VIOLATION INVOLVES THE COMPENSATION FOR THE UNDERGONE DAMAGES.WE MAKE RESERVATIONS ABOUT ALL THE RIGHTS DERIVING FROM PATENTS OR MODELS.

Drawer: Modify: